



DeltaDust[®]

INSECTICIDE

- PROVIDES QUICK CONTROL OF ANTS, BEES, COCKROACHES, FLEAS, SILVERFISH, TICKS, AND NUMEROUS STORED PRODUCT PESTS AS LISTED.
- KILLS LISTED CRAWLING INSECTS UP TO 8 MONTHS WHEN LEFT UNDISTURBED.
- FOR USE INDOORS AND OUTDOORS.
- DOES NOT CLUMP OR ABSORB MOISTURE.
- NON-STAINING AND ODORLESS.

ACTIVE INGREDIENT:

Deltamethrin 0.05%

OTHER INGREDIENTS 99.95%

TOTAL: 100.00%

EPA Reg. No. 432-772

See Booklet for Complete Precautionary Statements and Directions for Use.

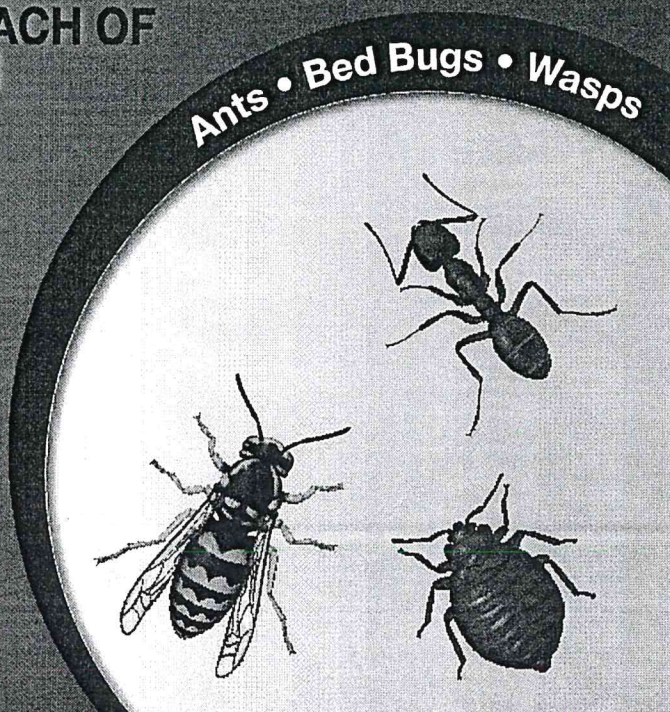
**KEEP OUT OF REACH OF
CHILDREN**

Net Weight

1 Pound

04191071

04494104G 160805AV1a



PARA EL USUARIO: Si usted no lee inglés, no use este producto hasta que le hayan explicado completamente las instrucciones en la etiqueta. (TO THE USER: If you cannot read English, do not use this product until the label has been fully explained to you.)

**For MEDICAL and TRANSPORTATION Emergencies ONLY Call
24 Hours A Day 1-800-334-7577**

For PRODUCT USE Information Call 1-800-331-2867

PRECAUTIONARY STATEMENTS

ENVIRONMENTAL HAZARDS

This product is extremely toxic to fish and aquatic invertebrates. Use with care when applying in areas adjacent to any body of water. To protect the environment, do not allow pesticide to enter or run off into storm drains, drainage ditches, gutters, or surface waters. Applying this product in calm weather when rain is not predicted for the next 24 hours will help to ensure that wind or rain does not blow or wash pesticide off the treatment area.

This pesticide is highly toxic to bees exposed to direct treatment on blooming crops or weeds. Do not apply this product or allow it to drift to blooming crops or weeds while bees are foraging the treatment area.

DIRECTIONS FOR USE

It is a violation of Federal Law to use this product in a manner inconsistent with its labeling. IMPORTANT: Read the entire Directions for Use, Precautions and Disclaimer of Warranties before using this product.

Containers larger than one pound may not be used or stored in food handling establishments.

Not for use on plants being grown for sale or other commercial use, or for commercial seed production, or for research purposes. For use on plants intended for aesthetic purposes or climatic modification and being grown in interior landscapes, ornamental gardens, parks, or on golf courses, or lawns and grounds.

DeltaDust® Insecticide is a ready-to-use insecticide dust which exhibits effective knockdown and residual control against the pests listed when used according to label directions.

APPLICATION RESTRICTIONS

Do not water the treated area to the point of run-off.

Do not make applications during rain.

Do not apply directly to sewers or drains, or to any area like a gutter where drainage to sewers, storm drains, water bodies, or aquatic habitat can occur, except as directed by this label.

Do not apply into closed air handling systems, voids or ducts including Heating, Ventilation, Air Conditioning (HVAC) appliances and systems that circulate, filter, or condition air that is directed into

rooms that are, or may be, occupied.

DeltaDust Insecticide can be used for residual pest control in and on buildings and structures and their immediate surroundings. Do not use in aircraft cabins. Permitted areas of use include:

aircraft	meat slaughtering and
animal quarters/kennels	packing plants
apartment buildings	mobile homes and recre-
bakeries	ational vehicles
breweries	nursing homes/day care
buses	centers
canneries	rail cars
cafeterias	restaurants
dairies	schools
food/feed manufacturing, pro-	sewers and underground
cessing and service establish-	tunnels
ments	stores and institutions
greenhouses (non-commercial)	supermarkets
grocery stores and supermar-	telecommunication conduits
kets	theaters
hospitals	trucks and trailers
hotels/motels	utility vaults and conduits
houses	vessels
industrial buildings and instal-	warehouses
lations	zoos
laboratories	
mausoleums	

DeltaDust Insecticide is intended for applications with a hand or power duster (Actisol® DPA or similar equipment), with a paint brush or by other suitable means, to hiding and runway areas and other places where insects are found. In living areas, make applications in such a manner as to avoid depositions on exposed surfaces or introducing the material into the air. In the home, all food processing surfaces and utensils should be covered during treatment or thoroughly washed before use. Exposed food should be covered or removed.

To apply insecticide directly into cracks and crevices, use a bulbous duster or other suitable equipment. Apply lightly and uniformly to infested area. Pay particular attention to cracks and crevices; service ducts; false floors and ceilings; wall voids; around electrical and telephone fittings and equipment; around water and sewer pipes; under and behind cabinets, refrigerators, and sinks; around windows and door frames; along baseboards; in attics and crawl spaces. The amount to be applied will vary with the site but should usually be in the range of 2 - 3 grams of DeltaDust Insecticide per square yard (or 0.5 lbs per 1000 square feet).

INDOOR USE FOOD/FEED HANDLING ESTABLISHMENT AP- PLICATIONS

DeltaDust Insecticide applications are permitted in both food/feed and non-food areas of food/feed handling establishments as a general surface, spot, or crack and crevice treatment. Food/feed handling establishments are defined as places other than private residences in which exposed food/feed is held, processed, prepared, or served. Included also are areas for receiving, storing, packing (canning, bottling, wrapping, boxing), preparing, edible waste storage, and enclosed processing systems (mills, dairies, edible oils, syrups) of food. Serving areas where food is exposed and the facility is in operation are also considered food areas.

Non-Food/Non-Feed Areas: Examples of non-food/non-feed areas include garbage rooms, lavatories, floor drains (to sewers), entries and vestibules, offices, locker rooms, machine rooms, boiler rooms, mop closets, and storage (after packaging, canning or bottling).

General Surface Application: Do not apply as a general surface application in the food/feed handling areas of the facility, when the facility is in operation or foods are exposed. Do not apply directly to food products. Cover or remove all food processing and/or handling equipment during application. After application in food processing plants, bakeries, cafeterias, and similar facilities, wash all equipment, benches, shelving, and other surfaces which food will contact. Clean food handling or processing equipment and thoroughly rinse with clean, fresh water.

Spot or Crack and Crevice Application: Spot and/or Crack and Crevice applications may be made while the facility is in operation provided exposed food is covered or removed from area being treated prior to application. Do not apply directly to food or food handling surfaces. DeltaDust Insecticide may also be applied as a void treatment using suitable equipment, as mentioned above, including Actisol DPA equipment. Be sure to thoroughly treat service ducts, false floors and ceilings, wall voids, attics, and crawl spaces. The amount of dust to be applied will vary with the site but should usually be in the range of 2 - 3 grams per square yard (or 0.5 lbs per 1000 square feet). Dust applications should be made in a manner to avoid deposits in exposed surfaces, introducing the material in the air.

ANTS, BOXELDER BUGS, COCKROACHES (INCLUDING BOTH RESISTANT AND NON-RESISTANT STRAINS), CRICKETS, FLEAS, FIREBRATS, AND SILVERFISH: Apply DeltaDust Insecticide thoroughly to all areas where these pests crawl and hide, especially in those areas described above. For ants, apply to ant trails, around doors and windows, and other places where ants enter premises.
TERMITES, CARPENTER ANTS, AND CARPENTER BEES: Apply to

voids or channels in damaged wooden members of a structure; to cracks, spaces, or bearing joints between wooden members of a structure; or between such members and the foundation; and in locations vulnerable to termite attack. Drilling may be necessary prior to applying DeltaDust Insecticide in these locations, but it must be recognized that such drilling and treating of timber in a particular location may not result in complete coverage of infested and vulnerable voids or galleries. Drilling directly overhead with subsequent application of DeltaDust Insecticide should be avoided. DeltaDust Insecticide can be applied in attics and crawl spaces to prevent entry of drywood and formosan termites at a rate of 0.5 lb per 1000 square feet of floor area. In these treatments, all vents and blowers should be closed. Retreat if necessary. For subterranean termites the purpose of such applications of DeltaDust Insecticide is to kill workers or winged forms which may be present in the treated channels at the time of treatment. Such applications are not a substitute for mechanical alteration, soil treatment, or foundation treatment, but merely a supplement. For active termite infestations get a professional termite inspection. This supplemental treatment can be particularly supportive of new construction.

CENTIPEDES, GROUND BEETLES, MILLIPEDES, SCORPIONS, SPIDERS, AND SOWBUGS: Apply DeltaDust Insecticide along and behind baseboards, to window and door frames, corners, pipes, storage locations, attics, crawl spaces, and other areas where these pests may enter or crawl.

WASPS AND BEES: It is generally advisable to treat wasp and bee nests in the evening when insects are less active and have returned to the nest. Wear protective clothing if deemed necessary to avoid stings. Using hand or power duster (Actisol® or similar equipment) or other suitable means, with extension tubes if necessary, thoroughly dust nest, entrance, and surrounding areas where insects alight. Nests in wall voids can be located by listening with your ear against the wall. Drill a hole in the area, blow dust in and reseal. For ground wasps, dust entrance and surrounding areas. For best results check nests carefully one or two days after treatment to ensure complete kill, then remove and destroy nest to prevent emergence of newly-hatched insects. If removal is not feasible, retreat the nest, if necessary. Do not use this product to treat overhead nests.

WEBBING CLOTHES MOTHS: Use DeltaDust Insecticide as a crack and crevice treatment in closets and other storage areas where these pests are found. This is an adjunct treatment and will not control moth larvae already on the clothes. DO NOT apply this product directly to clothing.

CARPET BEETLES (BLACK, FURNITURE, COMMON, AND VARIED): Dust where these insects are found, for example: on and

under edges of floor coverings, around baseboards, under rugs and furniture, and in closets. In residential areas do not apply as a broadcast application to floors or floor coverings.

BED BUGS: Apply DeltaDust Insecticide thoroughly to all areas where these pests are typically found including: folds and tufts of mattresses, coils or springs, cracks, and hollow posts of bed-frames, upholstery of chairs and sofas, picture frame moldings and all cracks and crevices in the room should be treated. Allow powder to remain in contact with folds and tufts of mattresses, chair and sofa upholstery for 4 - 6 hours, then thoroughly vacuum these treated areas, dispose of vacuum bag and place clean linens on bed. Also vacuum treated areas that will come into direct contact with humans and pets.

STORED PRODUCT & PANTRY PESTS: To aid in the control of the exposed stages of:

cadelles	merchant grain beetles
cheese mites	red flour beetles
cigarette beetles	rice weevils
confused flour beetles	rusty grain beetles
dark meal worms	saw-toothed grain beetles
dermestids	spider beetles
drugstore beetles	tobacco moths
grain mites	yellow meal worms
granary weevils	warehouse moths
lesser grain borers	indian meal
lesser mealworms	mediterranean flour

FOOD PROCESSING PESTS

Same crawling & flying pests as listed previously and Fruit flies, Phorid flies, and Sciarid flies.

Clean up waste materials, dust, dirt, and other debris. Thoroughly treat floors, walls, and other surfaces in storage and handling areas. Apply dust in cracks and crevices, behind and under cupboards, and other difficult to reach areas where insects may hide. DO NOT apply directly on food/feed, utensils or on areas where food/feed is stored.

ORNAMENTAL PLANT PESTS

For the control of:

aphids	leafrollers
beet armyworms	orange tortrix
blister beetles	periodical cicadas
boxelder bugs	plant bugs
certain leafminers (Boxwood, Holly, Oak, Spruce Needle)	rose chafers
	rose midges
	rose slugs
elm leaf beetles	tent caterpillars
flea beetles	thrips
Japanese beetles	weevils
leafhoppers	

SHRUBS AND ORNAMENTALS: Apply when insects or their damage first appear and repeat at weekly intervals or as necessary. Apply 8 ounces per 1000 square feet; or thoroughly apply to place a thin layer of dust on both upper and lower sides of leaves, stems, and flowers.

ROSES, PETUNIAS, CHRYSANTHEMUMS, GERANIUMS, CARNATIONS, AND OTHER RELATED FLOWERS: To control many leaf and flower chewing insects, apply as soon as the insect appears and repeat at 7 day intervals or as long as insects continue to appear. Apply a thin layer of dust on both upper and lower sides of leaves, stems, and flowers.

OUTDOOR USE

PERIMETER TREATMENT: Use DeltaDust Insecticide as a residual treatment for control of **ants, bees, centipedes, cockroaches, crickets, firebrats, fleas, ground beetles, millipedes, scorpions, silverfish, slugs, sowbugs, spiders, ticks, and wasps.** Make a residual treatment around windows and doors, porches, screens, eaves, patios, garages, under stairways, in crawl spaces, and other areas where pests hide. To help prevent the invasion of buildings and structures by these pests, apply thoroughly and uniformly to the foundation and crawl spaces where pests are active and may find entrance.

SEWER TREATMENT: Cockroach infestations in sanitary sewers may be treated with DeltaDust Insecticide to provide quick knock-down and short-term population suppression. When treating sewers, one manhole per 200 linear feet should be treated. Treatments are made by removing the manhole cover and replacing with a disc of plywood bored to receive the typical flexible hose from portable or truck-mounted ventilating equipment. Apply 1 - 2

Bayer Environmental Science

SAFETY DATA SHEET



DELTADUST® INSECTICIDE

Version 4.0 / USA
102000004846

1/11
Revision Date: 10/06/2015
Print Date: 10/07/2015

SECTION 1: IDENTIFICATION OF THE SUBSTANCE/MIXTURE AND OF THE COMPANY/UNDERTAKING

Product identifier

Trade name DELTADUST® INSECTICIDE

Product code (UVP) 05952247

SDS Number 102000004846

EPA Registration No. 432-772

Relevant identified uses of the substance or mixture and uses advised against

Use Insecticide

Restrictions on use See product label for restrictions.

Information on supplier

Supplier Bayer Environmental Science
2 T.W. Alexander Drive
Research Triangle PK, NC 27709
United States

Responsible Department Email: SDSINFO.BCS-NA@bayer.com

Emergency telephone no.

Emergency Telephone Number (24hr/ 7 days) 1-800-334-7577

Product Information Telephone Number 1-800-331-2867

SECTION 2: HAZARDS IDENTIFICATION

Classification in accordance with regulation HCS 29CFR §1910.1200

This material is not hazardous under the criteria of the Federal OSHA Hazard Communication Standard 29CFR 1910.1200.

Other hazards

No other hazards known.

SECTION 3: COMPOSITION/INFORMATION ON INGREDIENTS

Hazardous Component Name	CAS-No.	Concentration % by weight
Deltamethrin	52918-63-5	0.05
Crystalline quartz (respirable)	14808-60-7	2.50
Calcium carbonate	1317-65-3	95.4



DELTADUST® INSECTICIDE

Version 4.0 / USA
102000004846

2/11
Revision Date: 10/06/2015
Print Date: 10/07/2015

SECTION 4: FIRST AID MEASURES

Description of first aid measures

General advice	When possible, have the product container or label with you when calling a poison control center or doctor or going for treatment.
Inhalation	Move to fresh air. If person is not breathing, call 911 or an ambulance, then give artificial respiration, preferably mouth-to-mouth if possible. Call a physician or poison control center immediately.
Skin contact	Take off contaminated clothing and shoes immediately. Wash off immediately with plenty of water for at least 15 minutes. Call a physician or poison control center immediately.
Eye contact	Hold eye open and rinse slowly and gently with water for 15-20 minutes. Remove contact lenses, if present, after the first 5 minutes, then continue rinsing eye. Call a physician or poison control center immediately.
Ingestion	Call a physician or poison control center immediately. Rinse out mouth and give water in small sips to drink. DO NOT induce vomiting unless directed to do so by a physician or poison control center. Never give anything by mouth to an unconscious person. Do not leave victim unattended.

Most important symptoms and effects, both acute and delayed

Symptoms To date no symptoms are known.

Indication of any immediate medical attention and special treatment needed

Treatment Appropriate supportive and symptomatic treatment as indicated by the patient's condition is recommended. There is no specific antidote.

SECTION 5: FIREFIGHTING MEASURES

Extinguishing media

Suitable Carbon dioxide (CO₂), Dry chemical, Foam, Water

Unsuitable None known.

Advice for firefighters

Special protective equipment for fire-fighters Firefighters should wear NIOSH approved self-contained breathing apparatus and full protective clothing.

Further information Keep out of smoke. Fight fire from upwind position. Cool closed containers exposed to fire with water spray. Do not allow run-off from fire fighting to enter drains or water courses. Contain the spread of the fire-fighting media.

Flash point not applicable

Autoignition temperature no data available

Bayer Environmental Science

SAFETY DATA SHEET



DELTADUST® INSECTICIDE

Version 4.0 / USA
102000004846

3/11

Revision Date: 10/06/2015

Print Date: 10/07/2015

Lower explosion limit	not applicable
Upper explosion limit	not applicable
Explosivity	no data available
Dust explosion class	no data available

SECTION 6: ACCIDENTAL RELEASE MEASURES

Personal precautions, protective equipment and emergency procedures

Precautions Keep unauthorized people away. Isolate hazard area. Avoid contact with spilled product or contaminated surfaces.

Methods and materials for containment and cleaning up

Methods for cleaning up Avoid dust formation. Sweep up or vacuum up spillage and collect in suitable container for disposal. Clean contaminated floors and objects thoroughly, observing environmental regulations.

Additional advice Use personal protective equipment. Do not allow to enter soil, waterways or waste water canal.

Reference to other sections Information regarding safe handling, see section 7.
Information regarding personal protective equipment, see section 8.
Information regarding waste disposal, see section 13.

SECTION 7: HANDLING AND STORAGE

Precautions for safe handling

Advice on safe handling Handle and open container in a manner as to prevent spillage. Maintain exposure levels below the exposure limit through the use of general and local exhaust ventilation.

Hygiene measures Wash hands thoroughly with soap and water after handling and before eating, drinking, chewing gum, using tobacco, using the toilet or applying cosmetics.
Remove Personal Protective Equipment (PPE) immediately after handling this product. Before removing gloves clean them with soap and water. Remove soiled clothing immediately and clean thoroughly before using again. Wash thoroughly and put on clean clothing.

Conditions for safe storage, including any incompatibilities

Requirements for storage areas and containers Store in a cool, dry place and in such a manner as to prevent cross contamination with other crop protection products, fertilizers, food, and feed. Store in original container and out of the reach of children, preferably in a locked storage area.

**DELTADUST® INSECTICIDE**Version 4.0 / USA
102000004846

4/11

Revision Date: 10/06/2015

Print Date: 10/07/2015

SECTION 8: EXPOSURE CONTROLS/PERSONAL PROTECTION**Control parameters**

Components	CAS-No.	Control parameters	Update	Basis
Deltamethrin	52918-63-5	0.02 mg/m3 (TWA)		OES BCS*
Crystalline quartz (respirable) (Respirable fraction.)	14808-60-7	0.025 mg/m3 (TWA)	02 2012	ACGIH
Crystalline quartz (respirable) (Respirable dust.)	14808-60-7	0.05 mg/m3 (REL)	2010	NIOSH
Crystalline quartz (respirable) (Respirable dust.)	14808-60-7	0.1 mg/m3 (TWA)	1989	OSHA Z1A
Crystalline quartz (respirable) (Respirable dust.)	14808-60-7	0.1 mg/m3 (TWA)	06 2008	TN OEL
Crystalline quartz (respirable)	14808-60-7	0.27ug/m3 (AN ESL)	03 2014	TX ESL
Crystalline quartz (respirable)	14808-60-7	14ug/m3 (ST ESL)	03 2014	TX ESL
Crystalline quartz (respirable) (Respirable dust.)	14808-60-7	0.1 mg/m3 (TWA PEL)	08 2010	US CA OEL
Crystalline quartz (respirable) (Total dust.)	14808-60-7	0.3 mg/m3 (TWA PEL)	08 2010	US CA OEL
Crystalline quartz (respirable) (Respirable.)	14808-60-7	0.1 mg/m3 (TWA)	2000	Z3
Crystalline quartz (respirable) (Total dust.)	14808-60-7	0.3 mg/m3 (TWA)	2000	Z3
Crystalline quartz (respirable) (Respirable.)	14808-60-7	2.4millions of particles per cubic foot of air (TWA)	2000	Z3
Calcium carbonate (Respirable.)	1317-65-3	5 mg/m3 (REL)	2010	NIOSH
Calcium carbonate (Total)	1317-65-3	10 mg/m3 (REL)	2010	NIOSH
Calcium carbonate (Respirable fraction.)	1317-65-3	5 mg/m3 (PEL)	02 2006	OSHA Z1
Calcium carbonate (Total dust.)	1317-65-3	15 mg/m3 (PEL)	02 2006	OSHA Z1
Calcium carbonate	1317-65-3	5 mg/m3	1989	OSHA Z1A

Bayer Environmental Science

SAFETY DATA SHEET



DELTADUST® INSECTICIDE

Version 4.0 / USA
102000004846

5/11
Revision Date: 10/06/2015
Print Date: 10/07/2015

(Respirable fraction.)		(TWA)		
Calcium carbonate (Total dust.)	1317-65-3	15 mg/m3 (TWA)	1989	OSHA Z1A
Calcium carbonate (Total dust.)	1317-65-3	15 mg/m3 (TWA)	06 2008	TN OEL
Calcium carbonate (Respirable fraction.)	1317-65-3	5 mg/m3 (TWA)	06 2008	TN OEL
Calcium carbonate	1317-65-3	5ug/m3 (AN ESL)	03 2014	TX ESL
Calcium carbonate	1317-65-3	50ug/m3 (ST ESL)	03 2014	TX ESL

*OES BCS: Internal Bayer CropScience "Occupational Exposure Standard"

Exposure controls

Personal protective equipment

In normal use and handling conditions please refer to the label and/or leaflet. In all other cases the following recommendations would apply.

Respiratory protection

When respirators are required, select NIOSH approved equipment based on actual or potential airborne concentrations and in accordance with the appropriate regulatory standards and/or industry recommendations.

Hand protection

Chemical resistant nitrile rubber gloves

Eye protection

Safety glasses
or
Goggles

Skin and body protection

Wear long-sleeved shirt and long pants and shoes plus socks.

General protective measures

Follow manufacturer's instructions for cleaning/maintaining PPE. If no such instructions for washables, use detergent and warm/tepid water.
Keep and wash PPE separately from other laundry.

SECTION 9. PHYSICAL AND CHEMICAL PROPERTIES

Appearance	white
Physical State	powder
Odor	weak characteristic
Odour Threshold	no data available
pH	no data available
Vapor Pressure	no data available
Vapor Density (Air = 1)	no data available
Bulk density	ca. 55.5 lb/ft ³ (loose)

Bayer Environmental Science

SAFETY DATA SHEET



DELTADUST® INSECTICIDE

Version 4.0 / USA
102000004846

6/11
Revision Date: 10/06/2015
Print Date: 10/07/2015

Evapouration rate	not applicable
Boiling Point	not applicable
Melting / Freezing Point	not applicable
Water solubility	soluble
Minimum Ignition Energy	no data available
Decomposition temperature	no data available
Partition coefficient: n-octanol/water	no data available
Viscosity	not applicable
Flash point	not applicable
Autoignition temperature	no data available
Lower explosion limit	not applicable
Upper explosion limit	not applicable
Explosivity	no data available
Dust explosion class	no data available

SECTION 10: STABILITY AND REACTIVITY

Reactivity

Thermal decomposition	no data available
Chemical stability	Stable under recommended storage conditions.
Possibility of hazardous reactions	No hazardous reactions known.
Conditions to avoid	no data available
Incompatible materials	Strong acids
Hazardous decomposition products	no data available

SECTION 11: TOXICOLOGICAL INFORMATION

Exposure routes	Skin contact, Eye contact
Immediate Effects	



DELTADUST® INSECTICIDE

Version 4.0 / USA
102000004846

7/11

Revision Date: 10/06/2015
Print Date: 10/07/2015

Skin May be harmful if absorbed through skin.

Information on toxicological effects

Acute oral toxicity LD50 (rat) > 5,050 mg/kg

Acute inhalation toxicity LC50 (rat) > 26.1 mg/l
Exposure time: 4 h
Determined in the form of dust.

LC50 (rat) > 100 mg/l
Exposure time: 1 h
Determined in the form of dust.
Extrapolated from the 4 hr LC50.

Acute dermal toxicity LD50 (rabbit) > 2,020 mg/kg

Skin irritation No skin irritation (rabbit)

Eye irritation No eye irritation (rabbit)

Sensitisation Non-sensitizing. (guinea pig)

Assessment repeated dose toxicity

Deltamethrin caused neurobehavioral effects and/or neuropathological changes in animal studies. The toxic effects of Deltamethrin are related to transient hyperactivity typical for pyrethroid neurotoxicity.

Assessment mutagenicity

Deltamethrin was not mutagenic or genotoxic in a battery of in vitro and in vivo tests.

Assessment carcinogenicity

Deltamethrin was not carcinogenic in lifetime feeding studies in rats and mice.

ACGIH

Crystalline quartz (respirable)	14808-60-7	Group A2
---------------------------------	------------	----------

NTP

Crystalline quartz (respirable)	14808-60-7
---------------------------------	------------

IARC

Deltamethrin	52918-63-5	Overall evaluation: 3
Crystalline quartz (respirable)	14808-60-7	Overall evaluation: 1

OSHA

None.

Assessment toxicity to reproduction

Deltamethrin did not cause reproductive toxicity in a two-generation study in rats.

Assessment developmental toxicity

Deltamethrin caused developmental toxicity only at dose levels toxic to the dams. The developmental effects seen with Deltamethrin are related to maternal toxicity.

**DELTADUST® INSECTICIDE**Version 4.0 / USA
102000004846

8/11

Revision Date: 10/06/2015

Print Date: 10/07/2015

Further information

Only acute toxicity studies have been performed on the formulated product.
The non-acute information pertains to the active ingredient(s).

SECTION 12: ECOLOGICAL INFORMATION

Toxicity to fish	LC50 (Oncorhynchus mykiss (rainbow trout)) 0.00091 mg/l Exposure time: 96 h The value mentioned relates to the active ingredient deltamethrin.
Toxicity to aquatic invertebrates	EC50 (Daphnia magna (Water flea)) 0.00056 mg/l Exposure time: 48 h The value mentioned relates to the active ingredient deltamethrin.
Toxicity to aquatic plants	EC50 (Algae) > 9.1 mg/l Exposure time: 96 h The value mentioned relates to the active ingredient deltamethrin.
Biodegradability	Deltamethrin: not rapidly biodegradable
Koc	Deltamethrin: Koc: 10240000
Bioaccumulation	Deltamethrin: Bioconcentration factor (BCF) 1,400 Does not bioaccumulate.
Mobility in soil	Deltamethrin: Immobile in soil
Environmental precautions	Do not apply directly to water, to areas where surface water is present or to intertidal areas below the mean high water mark. Do not contaminate surface or ground water by cleaning equipment or disposal of wastes, including equipment wash water. Apply this product as specified on the label.

SECTION 13: DISPOSAL CONSIDERATIONS**Waste treatment methods**

Product	Pesticide, spray mixture or rinse water that cannot be used according to label instructions may be disposed of on site or at an approved waste disposal facility. Follow advice on product label and/or leaflet.
Contaminated packaging	Triple rinse containers. Dispose of empty container in a sanitary landfill or by incineration, or, if allowed by State/Provincial and local authorities, by burning. If burned, stay out of smoke. Follow advice on product label and/or leaflet.

Bayer Environmental Science

SAFETY DATA SHEET



DELTADUST® INSECTICIDE

Version 4.0 / USA
102000004846

9/11
Revision Date: 10/06/2015
Print Date: 10/07/2015

RCRA Information

Characterization and proper disposal of this material as a special or hazardous waste is dependent upon Federal, State and local laws and are the user's responsibility. RCRA classification may apply.

SECTION 14: TRANSPORT INFORMATION

49CFR

Not dangerous goods / not hazardous material

IMDG

UN number 3077
Class 9
Packaging group III
Marine pollutant YES
Proper shipping name ENVIRONMENTALLY HAZARDOUS SUBSTANCE, SOLID,
N.O.S.
(DELTAMETHRIN MIXTURE)

IATA

UN number 3077
Class 9
Packaging group III
Environm. Hazardous Mark YES
Proper shipping name ENVIRONMENTALLY HAZARDOUS SUBSTANCE, SOLID,
N.O.S.
(DELTAMETHRIN MIXTURE)

This transportation information is not intended to convey all specific regulatory information relating to this product. It does not address regulatory variations due to package size or special transportation requirements.

Freight Classification:

INSECTICIDES OR FUNGICIDES, N.O.I., OTHER THAN
POISON

SECTION 15: REGULATORY INFORMATION

EPA Registration No. 432-772

US Federal Regulations

TSCA list

Crystalline quartz (respirable) 14808-60-7

Calcium carbonate 1317-65-3

US. Toxic Substances Control Act (TSCA) Section 12(b) Export Notification (40 CFR 707, Subpt D)

None.

SARA Title III - Section 302 - Notification and Information

None.

SARA Title III - Section 313 - Toxic Chemical Release Reporting

None.

Bayer Environmental Science

SAFETY DATA SHEET



DELTADUST® INSECTICIDE

Version 4.0 / USA
102000004846

10/11
Revision Date: 10/06/2015
Print Date: 10/07/2015

US States Regulatory Reporting CA Prop65

This product contains a chemical known to the State of California to cause cancer.
Crystalline quartz (respirable) 14808-60-7

This product does not contain any substances known to the State of California to cause reproductive harm.

US State Right-To-Know Ingredients

Crystalline quartz (respirable)	14808-60-7	MN
Calcium carbonate	1317-65-3	MN

Canadian Regulations
Canadian Domestic Substance List
None.

Environmental CERCLA

None.

Clean Water Section 307 Priority Pollutants

None.

Safe Drinking Water Act Maximum Contaminant Levels

None.

EPA/FIFRA Information:

This chemical is a pesticide product registered by the Environmental Protection Agency and is subject to certain labeling requirements under federal pesticide law. These requirements differ from the classification criteria and hazard information required for safety data sheets, and for workplace labels of non-pesticide chemicals. Following is the hazard information required on the pesticide label:

Signal word: Caution!

Hazard statements: May be harmful if absorbed through skin.
Avoid contact with skin, eyes and clothing.
Wash thoroughly with soap and water after handling.

SECTION 16: OTHER INFORMATION

Abbreviations and acronyms

49CFR	Code of Federal Regulations, Title 49
ACGIH	US. ACGIH Threshold Limit Values
CAS-Nr.	Chemical Abstracts Service number
EINECS	European inventory of existing commercial substances
ELINCS	European list of notified chemical substances
IARC	US. IARC Monographs on Occupational Exposures to Chemical Agents
IATA	International Air Transport Association
IMDG	International Maritime Dangerous Goods

Bayer Environmental Science

SAFETY DATA SHEET



DELTADUST® INSECTICIDE

Version 4.0 / USA
102000004846

11/11

Revision Date: 10/06/2015

Print Date: 10/07/2015

N.O.S.	Not otherwise specified
NTP	US. National Toxicology Program (NTP) Report on Carcinogens
OECD	Organization for Economic Co-operation and Development
TDG	Transportation of Dangerous Goods
TWA	Time weighted average
UN	United Nations
WHO	World health organisation

NFPA 704 (National Fire Protection Association):

Health - 1 Flammability - 0 Instability - 0 Others - none

HMIS (Hazardous Materials Identification System, based on the Third Edition Ratings Guide)

Health - 0 Flammability - 0 Physical Hazard - 0 PPE -

0 = minimal hazard, 1 = slight hazard, 2 = moderate hazard, 3 = severe hazard, 4 = extreme hazard

Reason for Revision: The following sections have been revised: Section 15: Regulatory information.

Revision Date: 10/06/2015

This information is provided in good faith but without express or implied warranty. The customer assumes all responsibility for safety and use not in accordance with label instructions. The product names are registered trademarks of Bayer.